

HEPA - Deep Pleated HEPA Filters

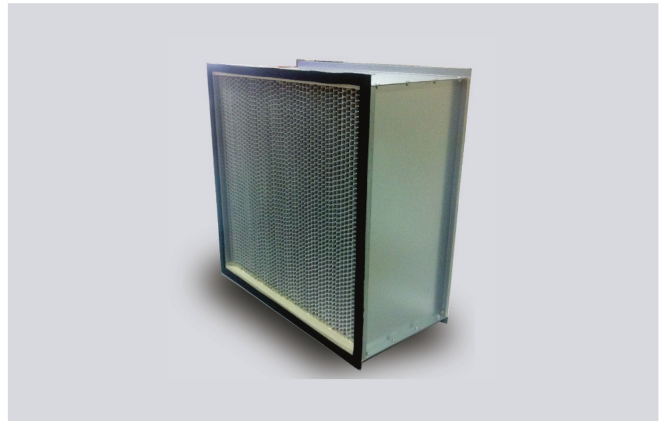
HEPA SC & HC are deep pleated box style filters with Aluminium Separators. It is made from micro - fine fiberglass paper media and comes with metal frames. Filters are available in H13/H14 efficiencies. Standard models comes in 150mm and 300mm frame depth. Filters are made with Double Turn Flange Or in Box styles.

AFSPL Models

HEPA

Deep Pleated box style filters

Available in H13, H14 grades Metal frame with no, single OR double header Filters in 150mm and 300mm depth



MEDIA FEATURES AND TECHNICAL DETAILS

Filter Media

HEPA filters are manufactured from continuous length superior quality micro glass fiber paper media available in various efficiency grades. The filter media is moisture resistant and fire retardant. Anti-microbial treated papers are also available for special applications. The uniform and closed pleat filter pack grants a high crossing surface to hold the very fine dusts.

Filter Frames

The standard frame construction includes Wood Particle Board, Galvanized steel and anodized aluminium. High temperature versions are constructed with Stainless steel frames.

Sealant & Gaskets

The pleated media pack is encapsulated into the filter frame utilizing a two part high density fire retardant urethane elastomer. A flat profile neoprene gasket or a one-piece seamless Neoprene rubber gasket is used to ensure a leak free seal to the filter housing. High temperature versions are manufactured with ceramic sealant and temperature resistant gasket.

Media Separators

In HEPA filters, the pleated media is evenly and accurately positioned by corrugated aluminium separators having hemmed edges to add strength and to protect the media pack. The HEPA utilizes corrugated stainless steel separators.

Filter Testing

The finished filters undergoes a thorough quality checking. They are scan tested individually to ensure a leak proof performance and each filter possesses the label showing the scan test result on it. We have testing facilities as per EN:799 and ASHRAE-52-79. Testing of filters can be done according to the customer's request.

| Filter Class | MOC | MERV Rating | Filter Eurovent Class | Frame Depth | Gasket Thickness | Testing Standard |
|--------------|--------------------|-------------|-----------------------|-------------|------------------|------------------|
| H-13/ H-14 | Aluminium Anodised | MERV-19 | EU-13/ EU-14 | 150 | 5MM | BS EN:1822 |
| | | MERV-19 | EU-13/ EU-14 | 300 | 5MM | BS EN:1822 |