

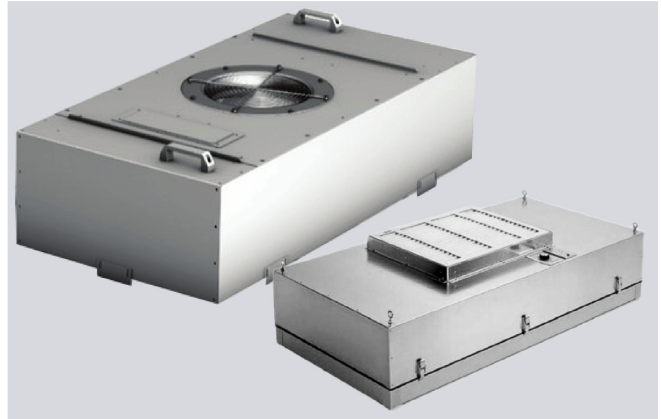
AFSPL FFU - Fan Filter Units

Fan Filter Units are designed to supply HEPA/ULPA purified air to clean rooms, laboratories, medical facilities or micro environments. They are usually installed within facility ceiling or floor grid. Major areas of application includes clean rooms, clean booths, precision machinery, laser industry, food & beverage manufacturing, bio chemical experiment labs, pharmaceuticals, hospitals and industry for electronics and semi conductors.

Afspl Models

Fan Filter Unit

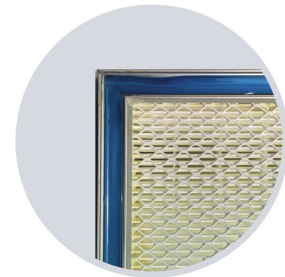
- SS or Powder coated MS construction
- Walkable body strength
- HEPA /ULPA variants
- Ultra Low noise
- Suitable for Class 1 to Class 10 ISO



Media Features and Technical Details

Housings are made up of SS 304 or Powder coated MS material or Aluminium sections. Walkable housings upto 95 Kg can be constructed upon special request. They will be given with required support for ceiling mounting. Room side grilles can be of aluminium, stainless steel or MS powder coated with more than 51% open area perforation. Units come with two options of inlet connections - one with 250mm dia inlet collars for duct connection and other without collars. Fan motor is of low noise and is an Electrically commutated type with backward curved blades. Proper airflow controls are equipped within the unit enabling room side access. DOP/POA testing ports and differential pressure testing ports also a part of the system itself. Plenum grilles / distribution grilles are fitted with a quarter-turn locking fastener and with a stainless steel retainer cables for easy installation & service.

Units comes with a pre filter in air inlet side followed by a HEPA/ULPA filter. The HEPA filter is of Gel Seal sealing which offers a 100% leak free operation in all working conditions. All units are factory tested and is completely leak proof. Filtration efficiency offered are 99.99% (H13) @ 0.3 micron, 99.999% (H14) @ 0.3 micron and 99.9995% (U15) @ 0.12 micron. Filter casing is extruded aluminium. Packs will be of 60mm height made from microfine glass fiber medium pleated using hot melt beads. Uniform spacing of media using these spacers assures unflow across the life of the filter along with minimal pressure drop. Filters used are rated at 100FPM. Filters could be replaceable from room side and will be positioned in a knife-edge portion in the filter casing. Units used in re-circulated air will have a G4/EU4/MERV8 prefilter installed at entry level. Frames of these pre filters will be card board and are of disposable category.



Gel Seal HEPA Filter

Selection Chart ▼

Model	Size mm (LxWxH)	Airflow (CMH)	IPD (Pa)	FPD (Pa)	Noise Level (db)	Rated power (V)	Power Supply (kw)
AFFU-44-XX-YY	600 x 600 x 430	580	120	400	52	210 / 110	0.12
AFFU-46-XX-YY	600 x 762 x 430	725	120	400	52	210 / 110	0.12
AFFU-47-XX-YY	600 x 915 x 430	870	120	375	52	210 / 110	0.12
AFFU-48-XX-YY	600 x 1200 x 430	1160	120	375	52	210 / 110	0.12
AFFU-88-XX-YY	1200 x 1200 x 430	2330	120	235	52	210 / 110	0.18

XX: 13 for H13, 14 for H14, 15 for U15 and 16 for U16, YY: 01 for ducted models, 00 for non-ducted models

All data are average indicative values with usual manufacturing and testing tolerances. We reserve the right to modify performance data without prior notices due to the constant technical improvement.

© Copyright: Every effort has been made to ensure that the information contained in this publication is accurate at the time of publishing. We assume no responsibility or liability for typographical errors or omissions or for any misinterpretation of the information within the publication and reserves the right to change without notice.